

**SOSSNER**  
STEEL STAMPS

SINCE 1910

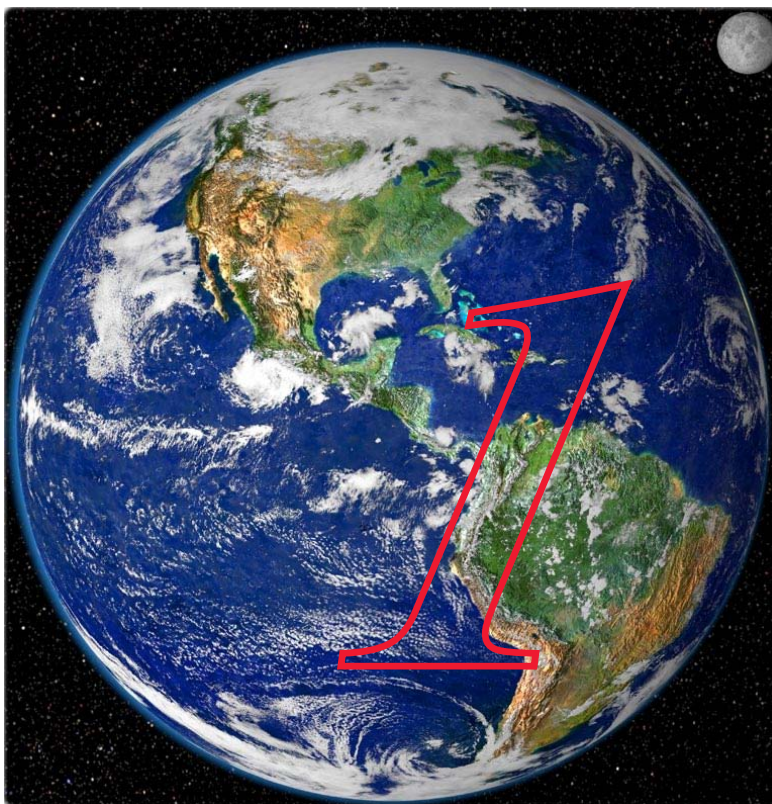
# SOSSNER

STEEL  
STAMPS



SINCE 1910

**We Make Impressions!**



**Equals**



**Made In U.S.A.**

## Guide to Marking Tools and Equipment

Customer Satisfaction is not our policy,  
It is our Business!

SOSSNER STEEL STAMPS  
180 Judge Don Lewis Blvd., Elizabethton, TN 37643  
Phone: (800) 828-9515 Fax: (423) 543-8546  
website: [www.sossnerstamps.com](http://www.sossnerstamps.com)

**SOSSNER**  
STEEL STAMPS

SINCE 1910

## SPECIALTY MARKING

First  
Impressions



**Coining/Embossing**



**Date  
Codes**



**Radial  
Inserts**



**Hot Marking Stamp**



**Radial Concave  
Stamp**



**Decorative  
Stamp**



**Shank Style**



**Trademark Stamp**



**Graduation Stamp**

For All  
Your Marking  
Questions,  
**SOSSNER**  
Is The  
Answer!

Sossner takes pride in the manufacture of superior quality, precision engineered marking and decoration stamps. Over 90 years of pride, tradition and expertise go into the processing, engineering, engraving and heat-treating of your order. You get more impressions with Sossner's marking stamps because of our unique TRUE-SHARP® hardening process. Additionally, Sossner marking stamps feature superior cutting, wear resistant edges and outstanding toughness for longer life. Sossner stocks 17 different alloy steels to assure you of the correct marking tool for your job.

# ROLL MARKING

**SOSSNER**  
STEEL STAMPS



Sossner offers a complete line of Bar Marking Rolls. Sossner's Wafer Rolls offer the versatility to change lines of text without having to re-ingrave a Solid Roll for each application. And of course, both our Solid and Wafer Rolls offer the superior-cutting, wear-resistant edges that come only from Sossner.



## Deep Impressions



The MFR series of pneumatic marking machines offers the versatility to both roll mark or stamp your product. When equipped with the optional table cylinder, the MFR series provides the cross slide action of a roll marker and the press action of a pneumatic press. Now you can have that one machine that fits all your marking requirements.

## IMPACT PRESSES

The SOSSNER line of manual and pneumatic impact presses provides the versatility needed in your manufacturing operation. Whether the need is marking, piercing, shearing, punching, forming, stamping or assembly, the SOSSNER impact press will be the one machine for all your needs. The unique impact spring design provides consistent pressure from piece to piece, even with variations of air pressure or operator input.

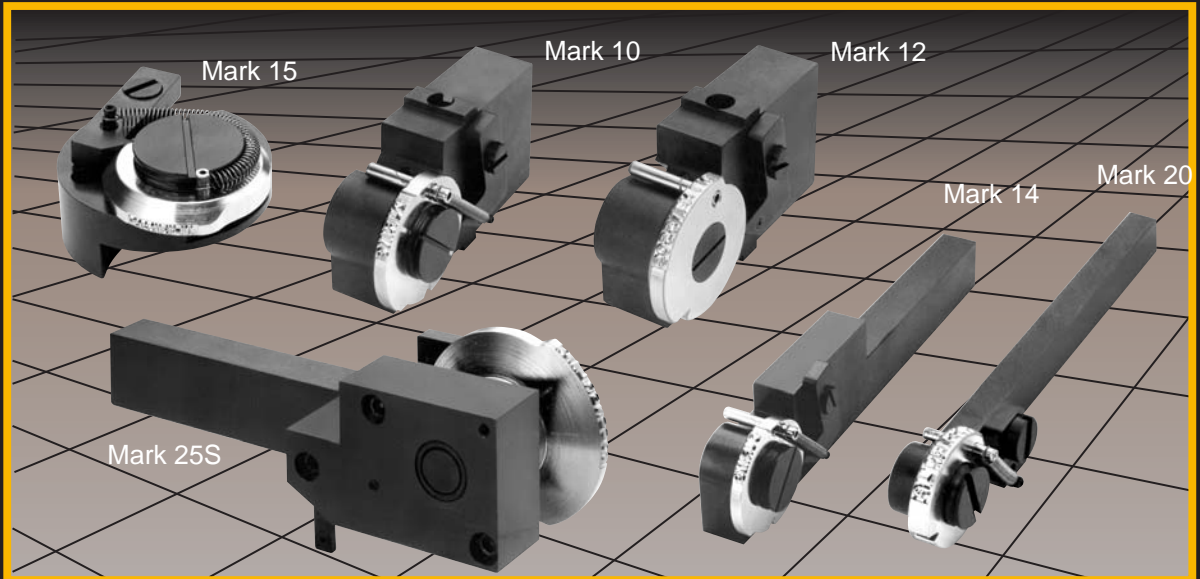
SOSSNER products have been solving manufacturing problems for over 90 years. Using computer aided design engineering and state-of-the-art manufacturing technology, SOSSNER has become the international leader in its field in quality, versatility and dependability.



**SOSSNER**  
STEEL STAMPS

## ROLL-A-MATIC

SINCE 1910



**We Guarantee The Lowest Cost of Any Patented Roll Marking Holder or Your Money Back.**

**We Sell More Marking Rolls For Our Competitor's Holders Than Our Competitor Does.**

**Your Satisfaction Is Guaranteed or Your Money Back.**

**We Deliver On Time or Your Order Is Free.**

**Customer Satisfaction Is Our #1 Priority.**

**You Can Look Elsewhere  
For A Better Roll  
Marking Product,  
But You Won't Find It!**

**Clear  
Impressions**

Sossner's patented Roll-A-Matic Mark 25S marking attachments are the most advanced built. The Mark 25S has no ratchet to wear, no pawl to slip, no screw to adjust. Sossner's state-of-the-art design requires no tools to change marking rolls. Simply put your roller inside the fork and, with finger pressure alone, the shaft can be pushed into a locked position. Our Mark 25S is a totally sealed unit and will not be affected by dirt, chips or other foreign material.

Many other styles and sizes of roll marking attachments are available for your specific model machine. All of Sossner's Roll-A-Matic Jrs. have the same patented single-rotation, positive-lock self-timing design. Sossner has the proper roll marking attachment for most automatic screw machines and CNC lathes, including a holder designed for Swiss machines.

A complete Roll-A-Matic catalog with prints and dimensions is available from your Sossner sales representative.





Sr. Jr.



**SOSSNER**  
STEEL STAMPS

for use with Mark 25S

for use with Mark 12



## ROLL TYPE HOLDERS

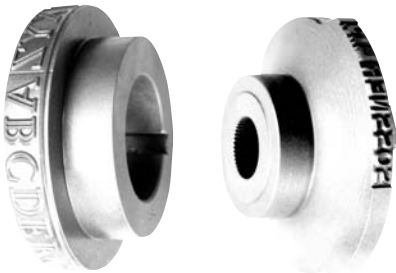
Sturdily built, inexpensive tools that automatically mark parts during the machine cycle, eliminating a secondary marking operation. You can change the legend, yet still maintain the quality impression you receive with a solid roll.

**Saf-T-Lock®** construction ensures that the type will not come out of the roll. Type can be used with top of character closest to the collet or with bottom of the character closest to the collet.

**TRUE-SHARP®** hardening gives the type longer life and sharper impressions.

Uniform, precisely marked parts result because the holder automatically moves into position for marking the next part.

## SOLID ENGRAVED MARKING ROLLS



Dependable Sossner solid engraved marking rolls are the benchmark of the industry. Each Sossner marking roll is precision machined and expertly engraved with deep, distinctive characters to ensure you a quality mark on your products.

Remember, always insist on **TRUE-SHARP®** hardening for extended life, only from your Sossner marking roll.

Solid  
Impressions

MODEL 110A

# SOSSNER 2-in-1 "Time Saver" TYPE HOLDER

INTERCHANGEABLE for HAND or POWER PRESS MARKING

***Why buy TWO when ONE will do?***

You get the holder and TWO interchangeable shanks for the price of one.



*(To change shank, knock out roll pin)*

**NO TOOLS NEEDED!**  
Shal-O-Groove™ type is locked into position by 1/2 turn of the Cam Lever. **INSTANT LOCK! INSTANT RELEASE!**

The precalculated radius of the Shal-O-Groove type is engineered to fit the Cam Locking Bar--with no loss of strength.

Sossner's Shal-O-Groove 2-in-1 "Time Saver" type holder is designed with a hardened steel bottom plate which insures uniform depth and sharply defined impressions.

- Type holding slot 1-1/2" x 3/4" deep.
- Holds up to 12 pieces of 1/8" steel type; 24 pieces of 1/16" type.
- Holding head and shanks machined from solid steel.
- Change shanks in only a few seconds.
- Press shank diameter 1".  
--or available to your specifications.

## Sharp Impressions

## Hy Carbon "Shal-O-Groove" STEEL TYPE/

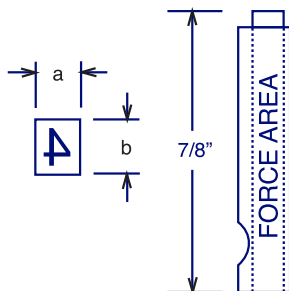
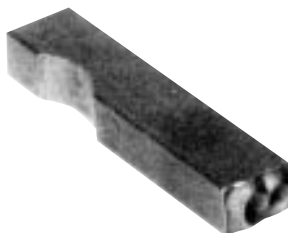
For use in Sossner 2-in-1 "Time Saver" Type Holder  
and other standard type holders

LETTERS  
NUMERALS  
SPACERS

**ALL TYPE IS "TRUE-SHARP" HARDENED FOR EXTRA LONG LIFE**

TYPE SIZES FROM 1/32" TO 1/4"

*(Larger Sizes Available)*



**NO BREAKAGE AT THE LOCKING POINT.**  
NOTE: No force transmitted through the groove as on our competitor's type. "Shal-O-Groove" type for easy locking and removal.

Dimension (a) of Sossner Hy Carbon Steel Type shown on this page is always the same as the height of the character impression, viz: 1/16" high characters are made from 1/16" wide blanks, etc. Thus, 16 pieces of 1/16" type require a space 1" wide. Extended or condensed type face can be furnished to specifications.

**CUSTOM STEEL TYPE:** When several lines are to be stamped with one setup, and there is a limited marking

area, body dimensions of the type can be machined to fit the legend within the area.

**24 HOUR SERVICE ON SPECIAL DIES:** We engrave these from your art, blueprint or sketch, then harden them by "TRUE-SHARP" process.

**EMBOSSING TYPE OR DIES:** For identification or decorating we supply male and female type or dies to order. These are precision made to exacting standards and delivered quickly.

# SOSSNER

STEEL  
STAMPS



SINCE 1910

**We Make Impressions!**

## 800-828-9515

180 JUDGE DON LEWIS BLVD.  
ELIZABETHTON, TN 37643

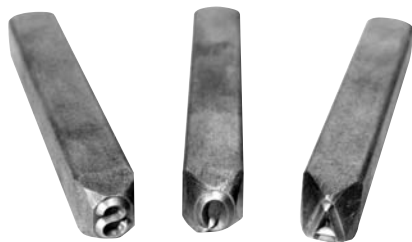
e-mail: [info@sossnerstamps.com](mailto:info@sossnerstamps.com)  
website: [www.sossnerstamps.com](http://www.sossnerstamps.com)

# True-sharp® STEEL HAND STAMPS/ LETTERS & FIGURES

Longer Lasting - Hammer Tough

**3 Money Saving Grades To Match Different Marking Needs Available From Stock**

Four factors produce the long life you can expect in these marking tools: 1) Sossner's TRUE-SHARP® hardening process; 2) the finest grade of alloyed tool steel; 3) precision engraving; and 4) precise machining. Sossner hand stamps have the long lasting cutting edge that bites deep and sharp with each impression. Your stamps are designed to stand up under incessant pounding. Ideal for your critical jobs.

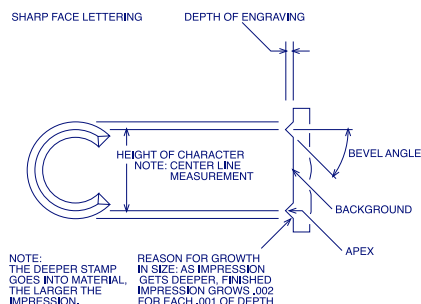


*Also!*

**FORWARD READING STEEL HAND STAMPS TO STAMP REVERSE**  
Designed For The Tool & Mold Maker

## INFORMATION CHART

Shown here is some of the basic information about marking tool design and character size. Additional data is available from your Sossner sales consultant or our in-house engineering staff.



$\frac{1}{16}$	C
$\frac{3}{32}$	C
$\frac{1}{8}$	C
$\frac{5}{32}$	C
$\frac{3}{16}$	C
$\frac{1}{4}$	C

Contact us:  
e-mail: [info@sossnerstamps.com](mailto:info@sossnerstamps.com)  
website: [www.sossnerstamps.com](http://www.sossnerstamps.com)

Remember: the better engineered your marking tool, the better your mark!

When ordering your Sossner marking product:

A. Indicate the kind of marking - i.e. roll marking, screw machine, hot marking, decorative, stamping, embossing, etc.

B. Submit drawing showing marking location, kind of material, hardness and condition at the time of marking.

C. Specify character size, style, depth and reading. State kind or style of stamp; single or multi-character.

D. State style and model of machine and production rate.

E. Provide samples of parts to be marked and sample of marking tool or type in use.

F. Your previous orders are on file for many years. If your order is similar to a previous order, or a duplicate, please let us know.

# SOSSNER

STEEL  
STAMPS



SINCE 1910

**We Make Impressions!**

**800-828-9515**

180 JUDGE DON LEWIS BLVD.  
ELIZABETHTON, TN 37643

e-mail: [info@sossnerstamps.com](mailto:info@sossnerstamps.com)  
website: [www.sossnerstamps.com](http://www.sossnerstamps.com)

**SOSSNER**  
STEEL STAMPS

SINCE 1910

Lasting Impressions!



High Production  
Facility



It is the Sossner pledge  
that we provide to you  
the best quality-  
engineered marking  
products at a fair price  
and delivery when  
you need them.

1-800-  
828-9515



Superior Quality  
Craftsmen



180 Judge Don Lewis Blvd., Elizabethton, TN 37643  
[info@sossnerstamps.com](mailto:info@sossnerstamps.com) [www.sossnerstamps.com](http://www.sossnerstamps.com)